



**Beaufort County Public Works
Stormwater Infrastructure
Project Summary**

Project Summary: Lady's Island Vacuum Truck- Harborview Circle, Rue Du Bois

Project #: 2010-014 Completed: Jul-09

Narrative Description of Project:
Cleaned out (22) catch basins. Jetted (4) crossline pipes and 182 L.F. of roadside pipe.

Material Cost, Rental Equipment Summary, and Labor

Material	Unit	Cost/Unit	Qty	Cost
Water	gallon	\$0.01	3,750	\$37.50
Diesel	gallon	\$2.15	65.0	\$139.75
Labor	hours		60.0	\$1,914.67
Total Cost of Materials, Rental Equip., and Labor				\$2,091.92

Note: Labor cost includes the employee's salary plus fringe benefits.

Equipment Cost

Item	Asset	Cost/Hour	Hrs.	Cost
Vacuum Truck	22812	\$20.30	29.0	\$588.70
Total Equipment Cost				\$588.70

Cost/hour excludes fuel cost.

Total Cost: \$2,680.62

Site Photographs

Before

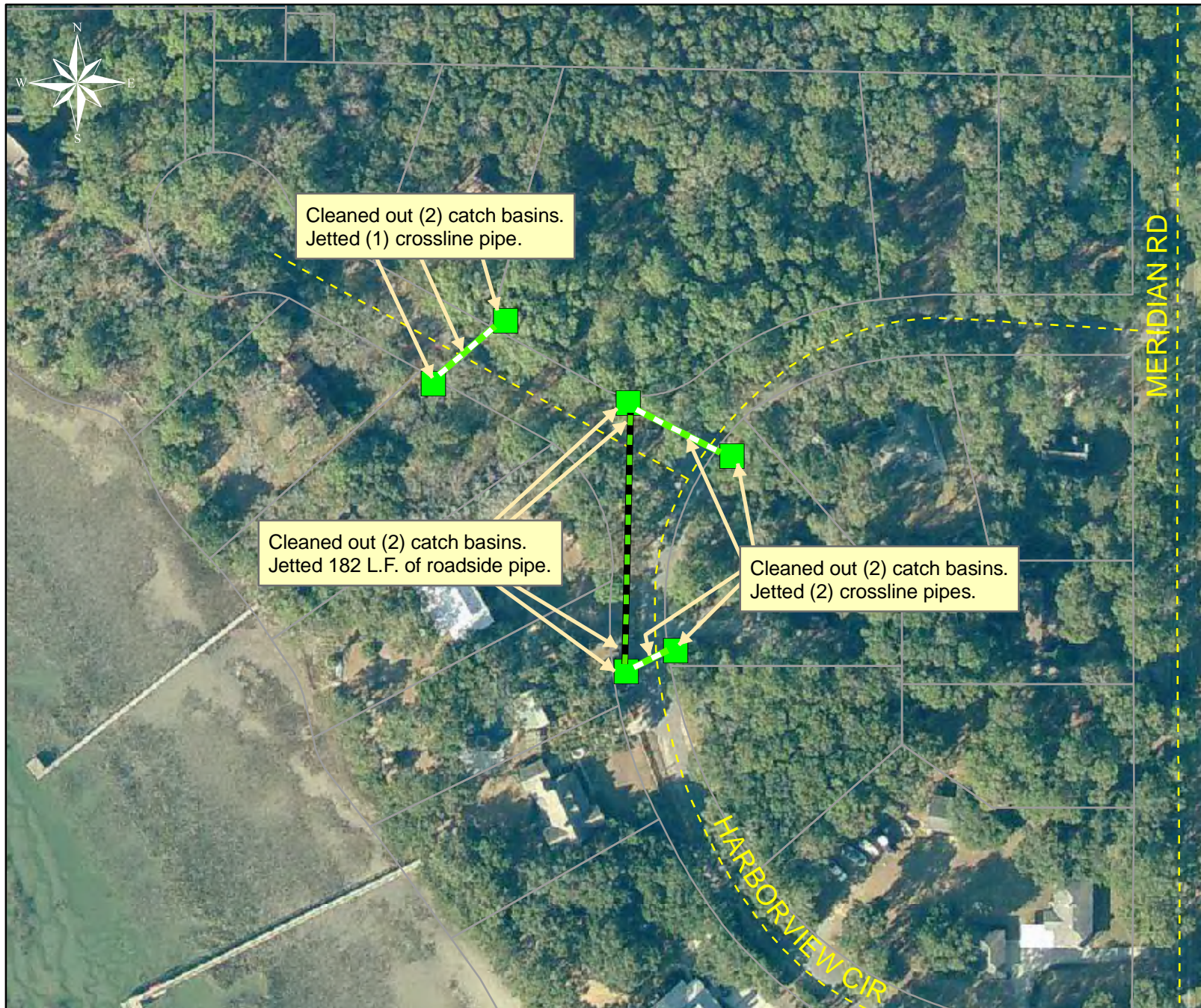


During



After





Cleaned out (2) catch basins.
Jetted (1) crossline pipe.

Cleaned out (2) catch basins.
Jetted 182 L.F. of roadside pipe.

Cleaned out (2) catch basins.
Jetted (2) crossline pipes.

Project: Harborview Circle

Activity: Vacuum Truck












Project #: 2010-014

Township: Lady's Island

Completed: July 2009

Legend

Drainage Type

-  River
-  Stream
-  Outfall
-  Lateral
-  Roadside
-  Crossline
-  D/W
-  Access
-  Piped
-  Bleeder
-  Parcels



1 inch equals 118.74 feet

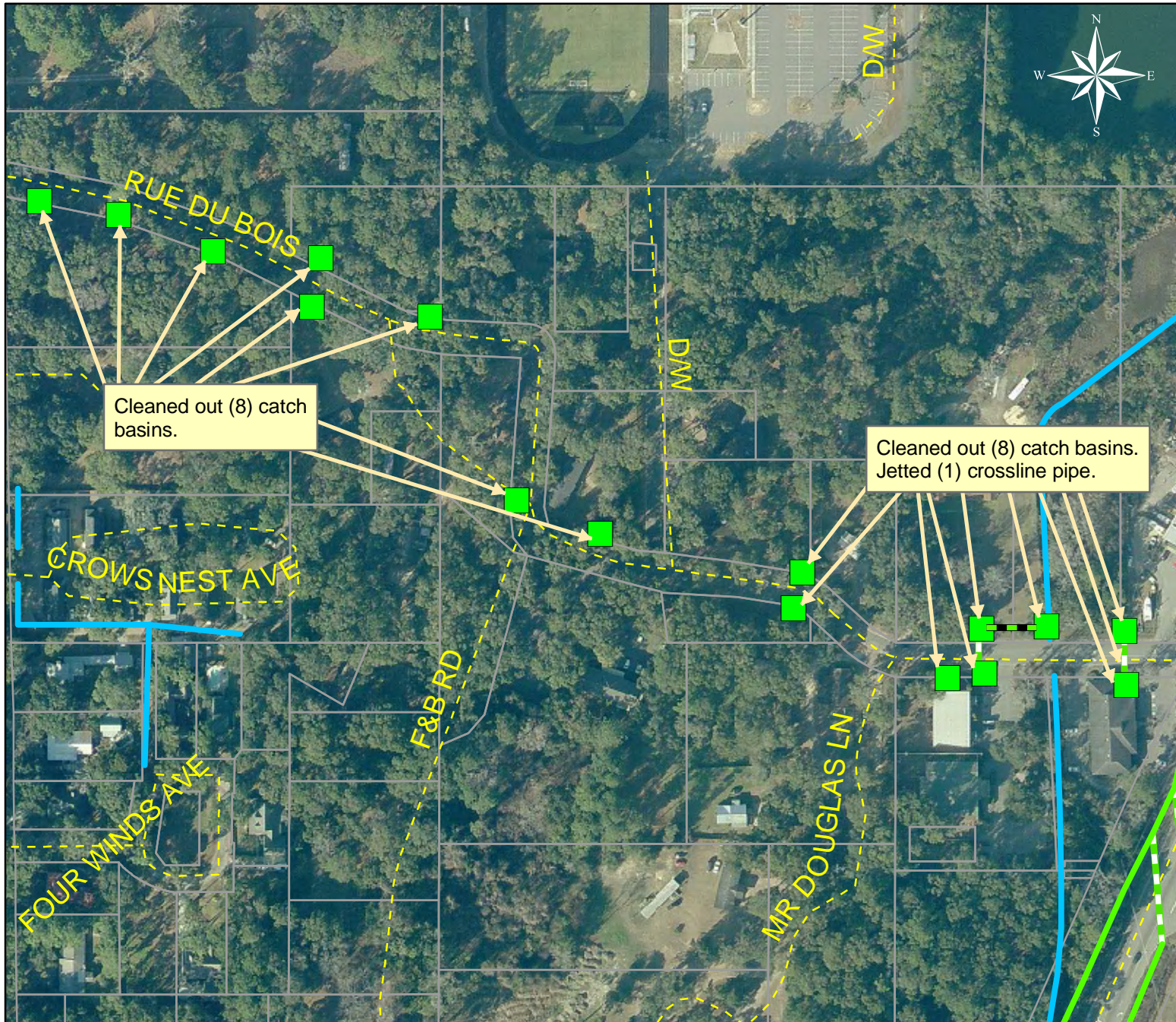
Project: Rue Du Bois

Activity: Vacuum Truck

Project #: 2010-039

Township: Lady's Island

Completed: July 2009



Legend

Drainage Type

- River
- Stream
- Outfall
- Lateral
- Roadside
- Crossline
- D/W
- Access
- Piped
- Bleeder
- Parcels



1 inch equals 211.06 feet